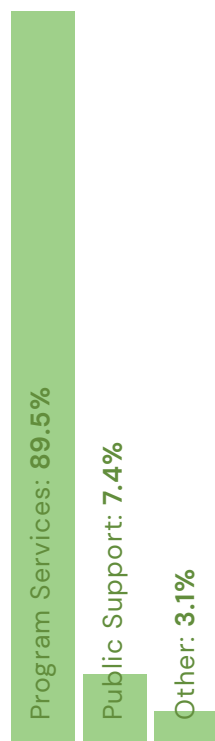


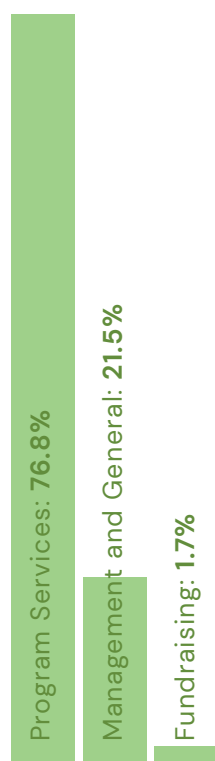
Statements of Financial Position

December 31, 2021 and 2020

Sources of Revenue



Allocation of Total Expenses



Assets	2021	2020
CURRENT ASSETS		
Cash and cash equivalents	\$ 9,847,845	\$ 9,046,274
Restricted cash	804,444	176,328
Patient accounts receivable, net	4,387,591	4,656,050
Pledges receivable, net	557,372	420,141
Prepaid expenses	302,710	280,590
Other current assets	87,867	97,433
TOTAL CURRENT ASSETS	\$ 15,987,829	\$ 14,676,816
Pledges receivable, net, excluding current portion	\$ 85,145	\$ 75,739
Investments	2,460,556	2,304,974
Property and equipment, net	19,640,007	20,326,459
Goodwill	554,293	554,293
Long-term deposits and other assets	139,729	94,915
TOTAL ASSETS	\$ 38,867,559	\$ 38,033,196
Liabilities and Net Assets		
CURRENT LIABILITIES		
Current portion of long-term debt	\$ 1,177,966	\$ 63,001
Accounts payable	731,639	613,148
Accrued expenses and other liabilities	2,615,152	2,412,475
TOTAL CURRENT LIABILITIES	\$ 4,524,757	\$ 3,088,624
Long-term debt, excluding current portion	\$ -	\$ 1,303,434
Other long-term liabilities	-	21,484
TOTAL LIABILITIES	\$ 4,524,757	\$ 4,413,542
NET ASSETS		
Without donor restrictions		
Undesignated	\$ 31,382,191	\$ 30,842,388
Board designated	685,528	624,090
TOTAL NET ASSETS WITHOUT DONOR RESTRICTIONS	\$ 32,067,719	\$ 31,466,478
With donor restrictions	2,275,083	2,153,176
TOTAL NET ASSETS	\$ 34,342,802	\$ 33,619,654
TOTAL LIABILITIES AND NET ASSETS	\$ 38,867,559	\$ 38,033,196